



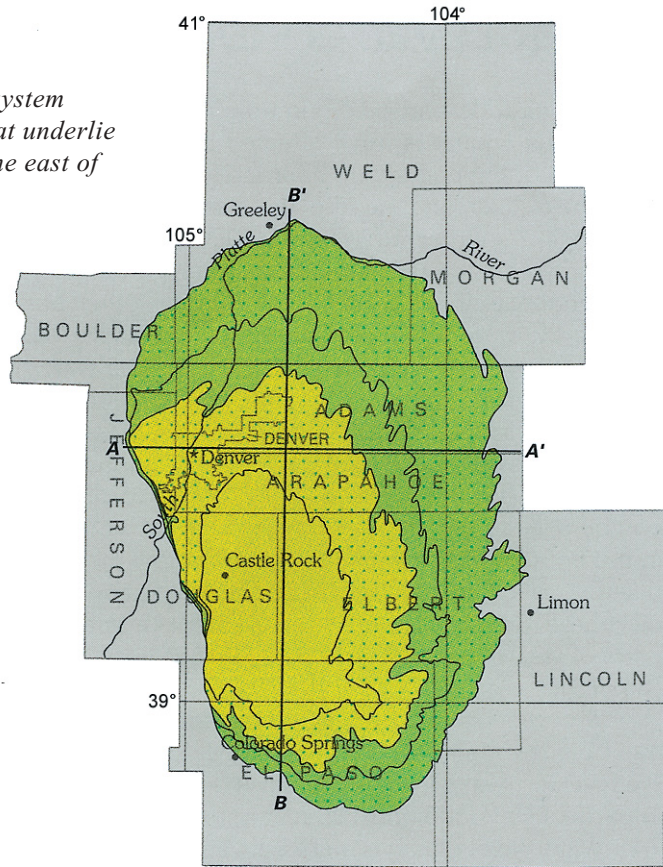


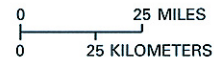
The Denver Basin aquifer system consists of four aquifers that underlie the plains of Colorado to the east of the Rocky Mountains.

Denver Basin aquifer system

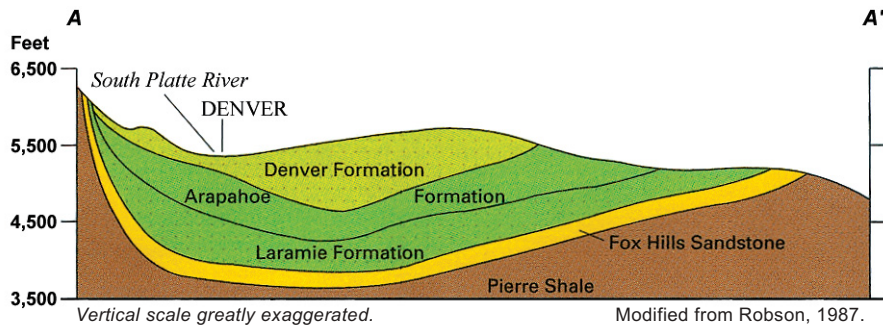
-  Dawson aquifer
-  Denver aquifer
-  Arapahoe aquifer
-  Laramie-Fox Hills aquifer



Base modified from U.S. Geological Survey digital data, 1:2,000,000, 1972



Denver Basin aquifer system cross-section



Formations containing the Denver Basin aquifers occupy the upper part of an asymmetrical bowl-shaped basin. The line of Section A - A' is shown in the figure at top of page.

Figure 12. Denver Basin Aquifers.

Source: U.S. Geological Survey, Ground Water Atlas of the United States.