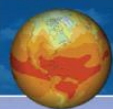
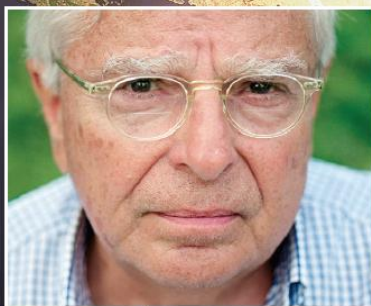


GLOBAL WARMING'S SIX AMERICAS IN MAY 2011



YALE PROJECT ON
CLIMATE CHANGE
COMMUNICATION
BRIDGING SCIENCE + SOCIETY



4C

George Mason University
Center for Climate Change Communication



George Mason University
Center for Climate Change Communication

Global Warming's Six Americas in May 2011

Interview dates: April 23 through May 12, 2011

Interviews: 981 Adults (18+)

Margin of error: +/- 3 percentage points at the 95% confidence level for the full sample.

NOTE: All results show percentages among all respondents, unless otherwise labeled. Totals may occasionally sum to more than 100 percent due to rounding.

This study was conducted by the Yale Project on Climate Change and the George Mason University Center for Climate Change Communication, and was funded by the Surdna Foundation, the 11th Hour Project, and the Grantham Foundation for the Protection of the Environment.

Principal Investigators:

Anthony Leiserowitz, PhD
Yale Project on Climate Change Communication
School of Forestry and Environmental Studies, Yale University
(203) 432-4865
anthony.leiserowitz@yale.edu

Connie Roser-Renouf, PhD
Center for Climate Change Communication
Department of Communication, George Mason University
(707) 825-0601
croserre@gmu.edu

Edward Maibach, MPH, PhD
Center for Climate Change Communication
Department of Communication, George Mason University
(703) 993-1587
emaibach@gmu.edu

Nicholas Smith, PhD
Yale Project on Climate Change Communication
School of Forestry and Environmental Studies, Yale University
(203) 432-1208
nicholas.smith@yale.edu

Cite as: Leiserowitz, A., Maibach, E., Roser-Renouf, C. & Smith, N. (2011) *Global Warming's Six Americas, May 2011*. Yale University and George Mason University. New Haven, CT: Yale Project on Climate Change Communication.

<http://environment.yale.edu/climate/files/SixAmericasMay2011.pdf>

TABLE OF CONTENTS

Page		
5		Executive Summary
11	Figure 1:	Proportion of the US population in the Six Americas, May 2011
12	Figure 2:	Changes in segment sizes from Nov. 2008 through May 2011
13	Figure 3:	Certainty about the Reality of Global Warming, by Segment and Survey
PART ONE: BELIEFS AND ATTITUDES		
14	Table 1:	Attitudinal certainty and need for additional information to decide
15	Table 2:	Questions about global warming
16	Table 3:	Top question about global warming
17	Table 4:	Self-perceived knowledge and beliefs about the cause of global warming
18	Table 5:	Perceptions of scientific agreement
19	Table 6:	Issue involvement
20	Table 7:	Inferences about global warming from recent weather
21	Table 8:	Risk perceptions: Who will be harmed
23	Table 9:	Local risk perceptions
25	Table 10:	Concern about health impacts of global warming
26	Table 11:	Risk perceptions: Human health impacts expected from global warming
29	Table 12:	Beliefs about current environmental impacts of global warming in the U.S.
31	Table 13:	Risk perceptions: When harm will occur
32	Table 14:	Mitigation Efficacy: Perceptions about the effectiveness of collective and individual action
34	Table 15:	Trust in information sources
PART TWO: SUPPORT FOR CLIMATE AND ENERGY POLICIES		
37	Table 16:	National issue priorities
38	Table 17:	Support for a national response: Conditions for & magnitude of action desired
39	Table 18:	Support for a national response: Specific climate and energy policies

41	Table 19:	Support for local climate and energy policies
44	Table 20:	Perceived importance of protecting local resources

PART THREE: ACTIONS

47	Table 21:	Energy conservation actions
48	Table 22:	Energy conservation intentions
49	Table 23:	Consumer activism
50	Table 24:	Political activism
51	Table 25:	Political activism intentions

PART FOUR: PROFILING VARIABLES

52	Table 26:	Household income and perceived impact of the economic downturn
53	Table 27:	Social networking
54	Table 28:	Organizational memberships
55	Table 29:	Military service
56	Table 30:	Political party, political ideology and voter registration
57		<i>Methods</i>

Executive Summary

Introduction

This report extends and updates an ongoing program of research analyzing Americans' interpretations of and responses to climate change. The research segments the American public into six audiences that range along a spectrum of concern and issue engagement from the Alarmed, who are convinced of the reality and danger of climate change, and who are highly supportive of personal and political actions to mitigate the threat, to the Dismissive, who are equally convinced that climate change is *not* occurring and that no response should be made. The Six Americas are not very different demographically, but are dramatically different in their beliefs and actions, as well as their basic values and political orientations. The groups were first identified in a nationally representative survey conducted in the fall of 2008, and were re-assessed in January and June of 2010. The current report is the fourth in the series; in it we provide new insights into the informational needs of the six groups, their understanding of the health impacts of global warming, beliefs about current environmental impacts of global warming in the U.S., and support for local adaptation and mitigation policies. All prior reports may be accessed at: <http://environment.yale.edu/climate/publications/> and <http://climatechange.gmu.edu>.

Segment Size

Figure 1
Figure 2

The proportion of the population in each of the Six Americas has remained relatively stable over the past year, with 39 percent of Americans in the two groups most concerned about climate change - the Alarmed and the Concerned - and a quarter of the population in the two groups least concerned about the issue - the Dismissive and Doubtful. The high level of concern found in the fall of 2008, on the eve of the recession and prior to the release of stolen emails (known as climategate), remains an unmatched benchmark for engagement with the issue of climate change.

Uncertainty

Table 1

Uncertainty on the issue remains high: More than a third of Americans agreed that they could easily change their minds about global warming – especially those in the Disengaged (73%) and Cautious (58%) segments. While 70 percent of the Dismissive said they do not need any more

		<p>information to form a firm opinion on the issue, majorities of all other groups said they need at least a little more information before making up their minds, including 91 percent of the Concerned, 89 percent of the Cautious, and 86 percent of the Disengaged. Close to half of the Disengaged (47%) said they need a lot more information to form a firm opinion.</p>
<p>Questions about Global Warming</p>	<p>Table 2 Table 3</p>	<p>Most Americans have many questions about global warming: If given the chance to talk to an expert on the issue, four of the Six Americas would ask nine or more questions, out of a possible 13. The question that the largest number of Americans would ask is how experts know that global warming is caused by human activities, rather than natural changes in the environment. The Alarmed and Concerned would most like to know what the nations of the world can do to reduce global warming, and if there's still time to do so. The Disengaged would most like to ask whether global warming is actually occurring, and what harm it will cause. And the Cautious, Doubtful and Dismissive would most like to have an expert explain how experts know that global warming is happening and is caused by human activities.</p>
<p>Self-Perceived Knowledge</p>	<p>Table 4</p>	<p>Of the Six Americas, the Dismissive were the most likely to say they are well-informed about global warming, with 91% saying they were very or fairly well-informed. Among the Alarmed, 85% said they were very or fairly well-informed, followed by two-thirds of the Concerned the Doubtful. The Disengaged were most likely to say they were <i>not</i> well-informed, with only 2% saying they were very well-informed.</p>
<p>Cause of Global Warming</p>	<p>Table 4</p>	<p>Three-quarters or more of the Alarmed and Concerned groups said global warming is caused primarily by human activities, while 85 percent or more of the Doubtful and Dismissive said either it is caused by natural changes in the environment or it is not happening. The Cautious and Disengaged were more divided, with the Cautious almost evenly split between human and natural causes, and the Disengaged more likely to believe that natural changes are responsible (47%) than human activities (36%).</p>

<p>Perceptions of Scientific Agreement</p>	<p>Table 5</p>	<p>Only in the Alarmed and Concerned groups were a majority aware that most scientists think global warming is occurring. Majorities in the other four groups said that either there was a lot of disagreement among scientists or that they didn't know. Even among the Alarmed and Concerned, however, awareness of the <i>strength</i> of scientific agreement is low: While approximately 97% of publishing climate scientists agree that climate change is occurring and that it is caused primarily by human activities, this high level of scientific agreement is recognized by only 44 percent of the Alarmed, 18 percent of the Concerned, 12 percent of the Cautious, and 5 percent or fewer of the Disengaged, Doubtful and Dismissive.</p>
<p>Inferences about Global Warming from Recent Weather</p>	<p>Table 7</p>	<p>Because Americans do not clearly distinguish between weather and climate, they may be inclined to infer whether climate change is occurring from recent weather. The results presented here suggest that the groups that are most undecided about global warming - the Cautious and Disengaged - are the most likely to use weather events in this way: Majorities of both groups agreed that last winter's record snowstorms made them question the reality of global warming, <i>and</i> that last summer's heat waves strengthened their belief in global warming. Conversely, the groups with stronger opinions - the Alarmed, Concerned, Doubtful and Dismissive - were more likely to say that recent weather strengthened what they already believed: The record heat waves last summer strengthened belief in global warming for 83 percent of the Alarmed and 75 percent of the Concerned, but the record snowstorms last winter made only 32 percent of the Alarmed and 39 percent of the Concerned question the reality of global warming. Conversely, 93 percent of the Dismissive and 82 percent of the Doubtful said that the heat waves did not strengthen their belief in global warming. The snowstorms, however, led 53 percent of the Dismissive and 45 percent of the Doubtful to question the reality of global warming.</p>
<p>Risk Perceptions</p>	<p>Table 8</p>	<p>Consistent with prior studies, we found that global warming was perceived as having greater impacts on distant people and places, with the greatest harm expected for people in developing nations, future generations, and other species. Within this general pattern, risk perceptions were much higher among the Alarmed and Concerned, with 100 percent of the Alarmed believing future generations and other species will be harmed a great deal or a moderate amount, as compared to 0 percent of the Dismissives.</p>

Local Risk Perceptions	Table 9	When asked about types of <i>local</i> harm expected from global warming, respondents said they expected the greatest impacts to be on agriculture, followed by native plants and wild birds and animals. More than half of the Cautious, Concerned and Alarmed expected that these four will experience moderate to great harm, and among the Alarmed, the proportions rose to more than 95 percent.
Human Health Impacts	Table 11	The majority of Americans expected that global warming will increase deaths and injuries in the U.S. due to floods, hurricanes, winter storms and wildfires; 53 percent also expected increases in heat stroke, and half anticipated increased malnutrition due to spikes in food prices. Fewer than half said there will be increases in lung diseases, such as asthma, and in infectious diseases carried by insects and infected water. Within the segments, the anticipation of these health impacts was very high among the Alarmed and Concerned, and relatively high among the Cautious. Very few of the Disengaged, Doubtful and Dismissive expected health impacts from global warming, however. Roughly two-thirds of the Disengaged said that they don't know whether global warming will have each of these impacts, while the Doubtful and Dismissive said there will be no impacts.
Current Impacts in the U.S.	Table 12	Close to half of Americans believe that global warming is already causing or worsening a variety of environmental problems in the U.S. The current impacts most likely to be perceived were coastline erosion and flooding (52%), droughts (50%), hurricanes (49%), rivers flooding (48%) and wildfires (45%). As with health impacts, attribution of these impacts to global warming was higher among the Alarmed and Concerned. Two-thirds or more of the Disengaged said they didn't know; half of the Doubtful said the impacts are not happening and another third said they didn't know; and about 90 percent of the Dismissive said the impacts are not happening.

Trust in Sources	Table 15	<p>Three-quarters of Americans said they trust the National Oceanic and Atmospheric Administration (NOAA) and scientists as sources of information on global warming. While three-quarters or more of the Disengaged, Cautious, Concerned and Alarmed said they trust these two sources, only half of the Doubtful said they trust them. Among the Dismissive, only a quarter trusted NOAA and 30 percent trusted scientists, and yet these were their two most trusted sources of the 10 assessed. Overall, majorities trusted a number of other government agencies: The U.S. Centers for Disease Control and Prevention (CDC), the Environmental Protection Agency (EPA), the National Park Service, and the Department of Energy (DOE). Trust in President Obama was highly polarized, with 77 percent of the Alarmed saying they trusted him, as compared to 21 percent of the Doubtful and 3 percent of the Dismissive. The mainstream news media and congressional representatives were the least trusted sources, with fewer than 10 percent of any audience segment saying they strongly trusted them.</p>
Issue Priorities	Table 16	<p>Two-thirds of Americans said that developing sources of clean energy should be a high or very high priority for the president and Congress, and half said that global warming should be. Both issues were marked by polarization among the six audiences, although the differences were smaller for clean energy: 98 percent of the Alarmed said that clean energy should be a high or very high priority, as compared to 24 percent of the Dismissive. By comparison, 96% of the Alarmed said global warming should be a priority, but none of the Dismissive thought it should be.</p>
Support for Local Climate and Energy Policies	Table 19	<p>Three-quarters of Americans said they would like their communities to build more bike paths and bike lanes, and to increase the availability of public transportation. This support extended across the six audience groups, with 60 percent of the Dismissive saying they supported these policies, as compared to more than 90 percent of the Alarmed. A number of other policies received support from majorities of four of the six segments: Majorities of the Alarmed, Concerned, Cautious and Disengaged supported requiring new homes to be more energy efficient; changing zoning rules to reduce the need for a car and commuting times; and promoting the construction of energy-efficient apartment buildings. The one policy receiving stronger support from the Dismissive than other groups was building a local nuclear power plant. A majority of the Dismissive (57%) supported this, while majorities of all other groups opposed it.</p>

**Protecting
Local Resources**

Table 20

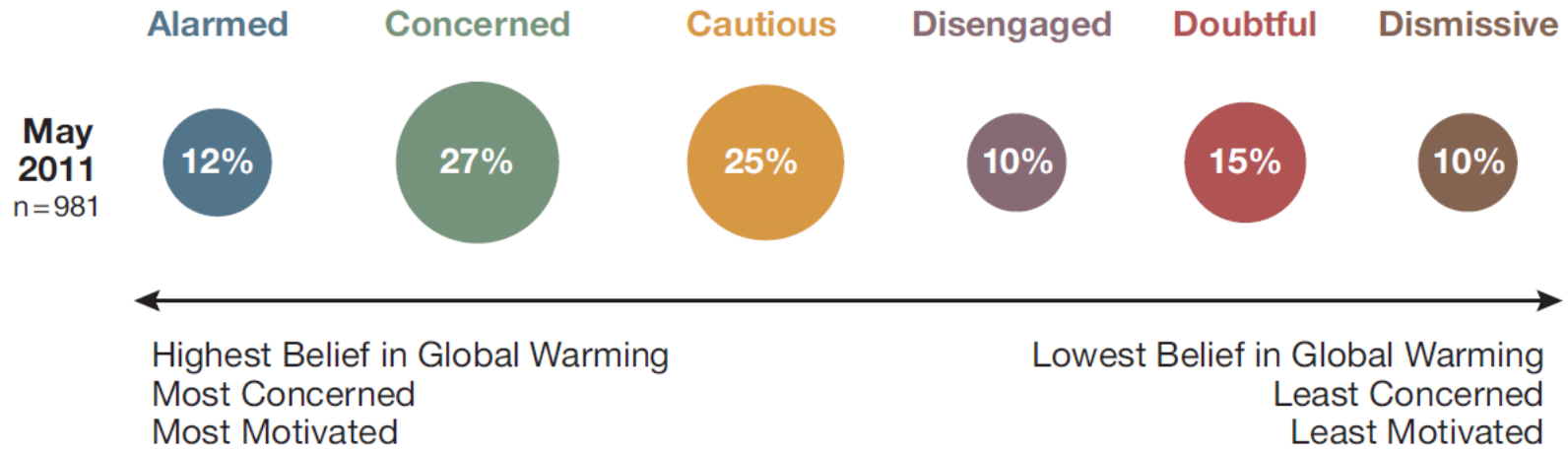
Because they do not perceive climate change to be a danger, few of the Dismissive or Doubtful favored local community action to protect their resources; fewer than a third of the Doubtful and 11 percent or less of the Dismissive expressed support for protecting any local resource. Among the other four groups, however, protecting local resources was perceived as important: Half or more of each group expressed support for protecting *all* of the resources that applied to their communities, including the water supply, public health, agriculture, natural resources, the sewer system and public property.

**Political
Activism**

Table 24

Political activism around the issue of global warming appears to be more prevalent among the groups that favor national action on the issue than among the groups that oppose it: 28 percent of the Alarmed and 10 percent of the Concerned said that they have contacted a political official about global warming, and almost all of these contacts were in support of action to reduce warming. By comparison, 7 percent of the Dismissive and 5 percent of the Doubtful had contacted officials to express opposition to mitigation policies. The Alarmed and Concerned were also more likely to have posted comments online about global warming than the Doubtful and Dismissive. A majority of the Alarmed (54%) and 22 percent of the Concerned have supported organizations working to reduce global warming; few members of the other four groups have supported global warming organizations.

FIGURE 1 | Proportion of the U.S. Population in the Six Americas, May 2011



Proportion represented by area

Source: Yale/George Mason University

FIGURE 2 | Changes in Segment Sizes from Nov. 2008 through May 2011

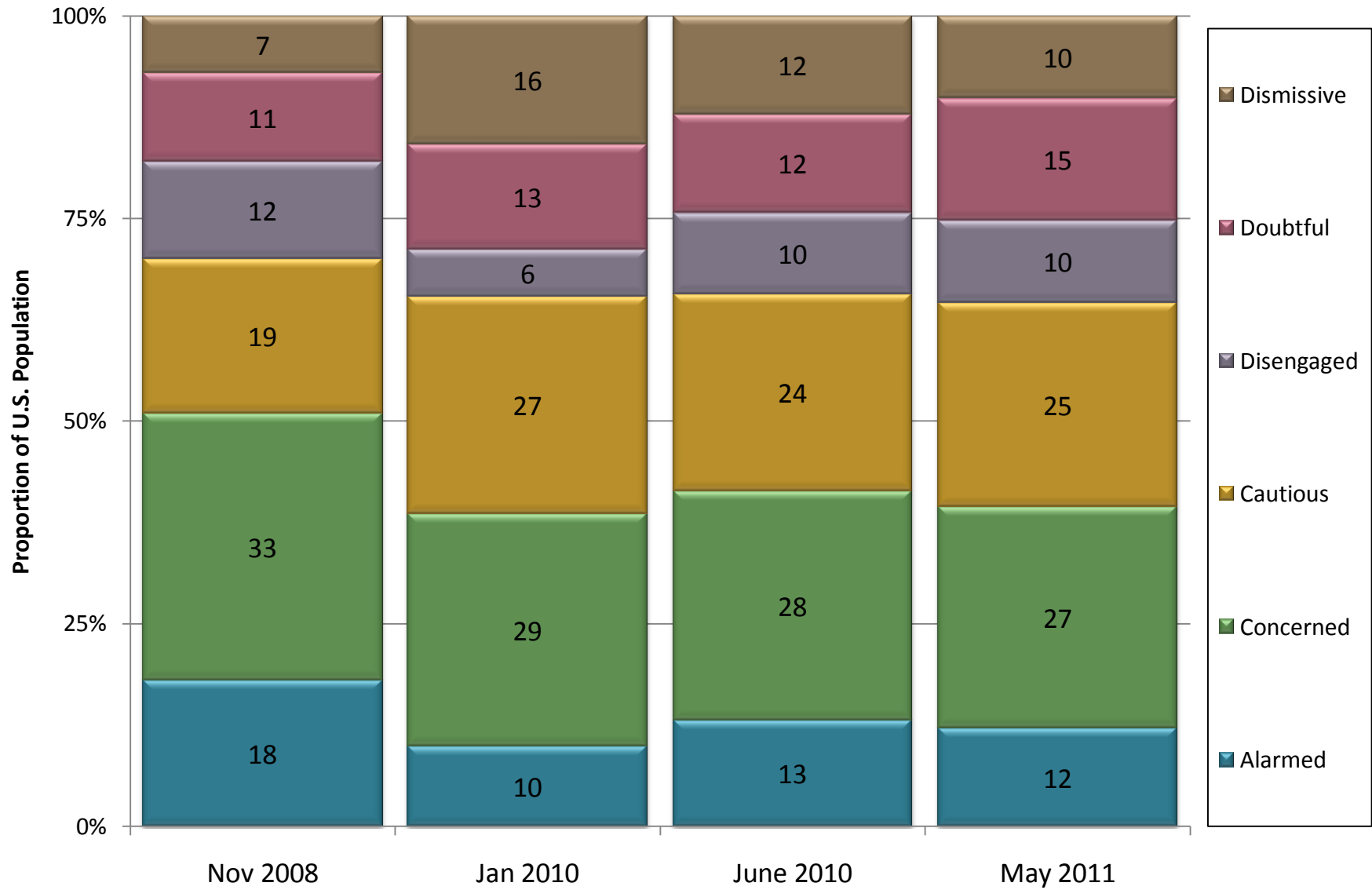
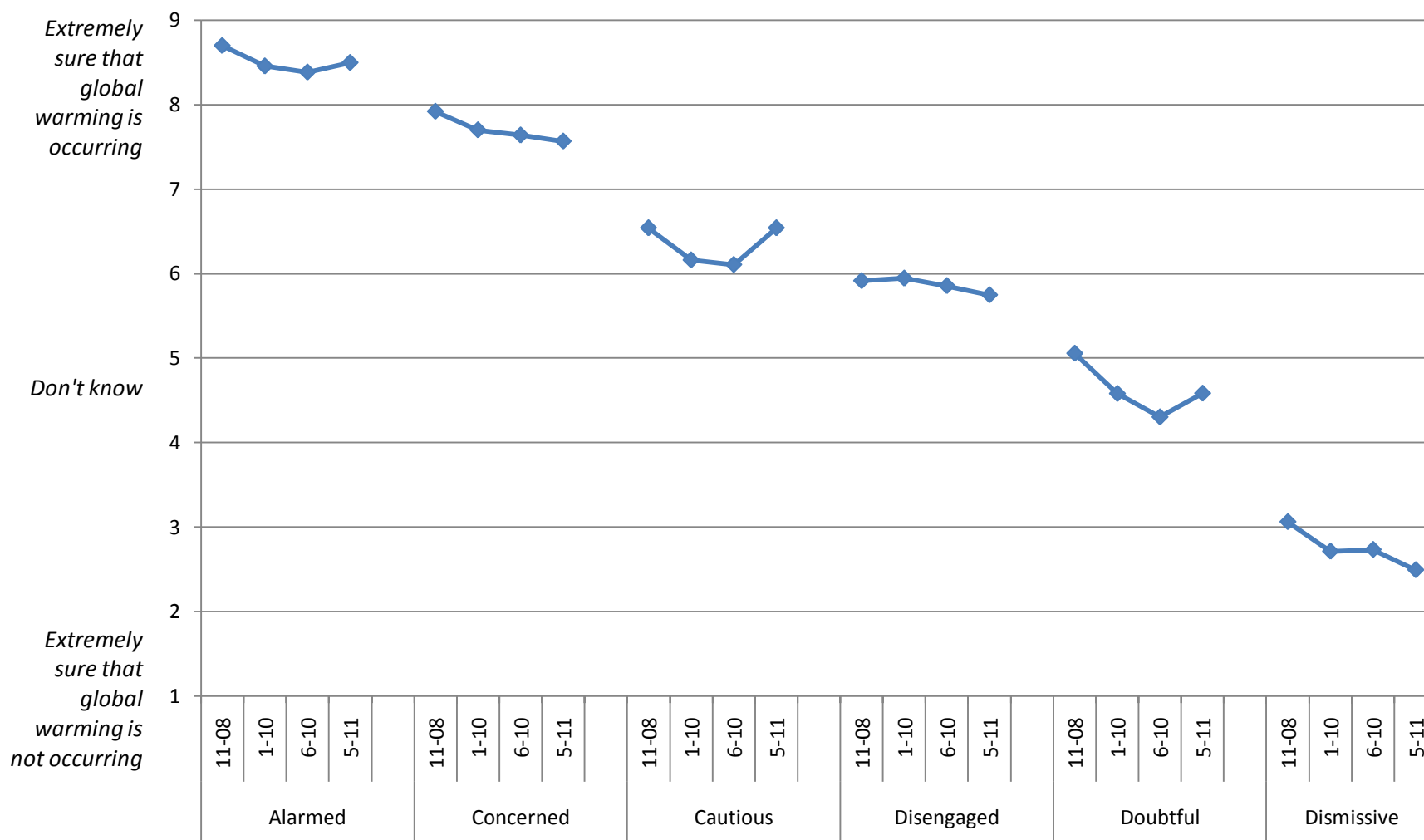


FIGURE 3 | Certainty that Global Warming Is Occurring, by Segment and Survey



Note: Certainty about the reality of global warming was measured on a 9-point scale, where 9 = extremely sure that global warming is occurring; 8 = very sure that global warming is occurring; 7 = somewhat sure that global warming is occurring; 6 = not at all sure that global warming is occurring; 5 = don't know; 4 = not at all sure that global warming is not occurring; 3 = somewhat sure that global warming is not occurring; 2 = very sure that global warming is not occurring; and 1 = extremely sure that global warming is not occurring.

TABLE 1 | Attitudinal Certainty and Need for Additional Information to Decide

How much do you agree or disagree with the following statement? "I could easily change my mind about global warming."	National Average	Alarmed (12%)	Concerned (27%)	Cautious (25%)	Disengaged (10%)	Doubtful (15%)	Dismissive (10%)
<i>Strongly agree</i>	6	3	7	6	15	3	1
<i>Somewhat agree</i>	32	2	28	52	58	26	10
<i>Somewhat disagree</i>	33	16	40	35	20	43	30
<i>Strongly disagree</i>	29	79	26	7	7	28	59

On some issues people feel that they have all the information they need in order to form a firm opinion, while on other issues they would like more information before making up their mind. For global warming, where would you place yourself?

<i>I need a lot more information</i>	22	16	17	21	47	25	11
<i>I need some more information</i>	30	22	50	39	19	7	6
<i>I need a little more information</i>	26	35	24	29	19	29	13
<i>I do not need any more information</i>	23	28	9	11	14	39	70

TABLE 2 | Questions about Global Warming

	<i>National Average</i>	<i>Alarmed (12%)</i>	<i>Concerned (27%)</i>	<i>Cautious (25%)</i>	<i>Disengaged (10%)</i>	<i>Doubtful (15%)</i>	<i>Dismissive (10%)</i>
<i>How do you know that global warming is caused mostly by human activities, not natural changes in the environment?</i>	82	78	84	91	79	79	65
<i>How do you know that global warming is happening?</i>	77	71	76	85	82	73	71
<i>What harm will global warming cause?</i>	74	79	86	85	87	49	35
<i>What causes global warming?</i>	74	74	80	81	83	65	44
<i>What can the nations of the world do to reduce global warming?</i>	73	92	92	81	77	46	20
<i>Is there still time to reduce global warming, or is it too late?</i>	71	85	89	81	78	43	16
<i>When will global warming begin to harm people?</i>	71	78	85	78	79	55	25
<i>What can the United States do to reduce global warming?</i>	70	89	88	79	76	41	13
<i>What can I do to reduce global warming?</i>	69	86	87	78	78	39	11
<i>Is global warming really happening?</i>	68	58	69	81	81	61	40
<i>How much would it cost the United States to reduce global warming?</i>	67	77	80	77	71	47	25
<i>Will global warming harm people?</i>	66	61	76	80	76	46	27
<i>Is global warming a hoax?</i>	53	22	38	66	64	61	77
Average number of questions would ask	8.4	9.1	9.8	9.4	9.2	6.3	3.8

Note: The three most frequently selected questions for each segment have been highlighted in blue in the table.

TABLE 3 | Top Question about Global Warming

If you could ask the expert on global warming ONLY ONE QUESTION, which question would you ask?	<i>National Average</i>	<i>Alarmed (12%)</i>	<i>Concerned (27%)</i>	<i>Cautious (25%)</i>	<i>Disengaged (10%)</i>	<i>Doubtful (15%)</i>	<i>Dismissive (10%)</i>
<i>How do you know that global warming is caused mostly by human activities, not natural changes in the environment?</i>	18	2	13	18	7	38	34
<i>What can the nations of the world do to reduce global warming?</i>	11	28	16	8	3	0	0
<i>Is there still time to reduce global warming, or is it too late?</i>	11	27	16	7	6	2	0
<i>How do you know that global warming is happening?</i>	11	1	4	11	9	17	38
<i>Is global warming really happening?</i>	10	4	4	14	20	14	5
<i>What harm will global warming cause?</i>	9	9	10	11	17	2	0
<i>What causes global warming?</i>	7	5	7	8	13	8	0
<i>What can I do to reduce global warming?</i>	7	8	11	8	6	0	0
<i>Is global warming a hoax?</i>	5	0	1	4	6	11	22
<i>When will global warming begin to harm people?</i>	4	3	6	3	7	5	0
<i>What can the United States do to reduce global warming?</i>	4	11	8	2	1	2	0
<i>Will global warming harm people?</i>	3	1	3	4	4	2	0
<i>How much would it cost the United States to reduce global warming?</i>	1	2	1	2	1	2	1

Note: The three most frequently selected questions for each segment have been highlighted in blue in the table.

TABLE 4 | Self-Perceived Knowledge and Beliefs about the Cause of Global Warming

Personally, how well informed do you feel you are about global warming?	National Average	Alarmed (12%)	Concerned (27%)	Cautious (25%)	Disengaged (10%)	Doubtful (15%)	Dismissive (10%)
<i>Very well informed</i>	10	25	3	3	2	9	38
<i>Fairly well informed</i>	51	60	65	41	12	58	53
<i>Not very well informed</i>	34	13	29	52	69	26	8
<i>Not at all informed</i>	5	2	2	4	17	7	1
Assuming global warming is happening, do you think it is...¹							
<i>Caused mostly by human activities</i>	47	79	75	48	36	11	1
<i>Caused mostly by natural changes in the environment</i>	36	8	9	45	47	70	51
<i>Caused by human activities and natural changes²</i>	2	3	0	0	2	3	4
<i>None of the above because global warming isn't happening</i>	8	0	0	1	6	15	43
<i>Other (Please specify)</i>	7	9	15	6	5	1	0
<i>Don't know²</i>	1	0	1	0	5	0	1

¹First and second response options were rotated in the survey.

²Volunteered.

TABLE 5 | Perceptions of Scientific Agreement

		<i>National Average</i>	<i>Alarmed (12%)</i>	<i>Concerned (27%)</i>	<i>Cautious (25%)</i>	<i>Disengaged (10%)</i>	<i>Doubtful (15%)</i>	<i>Dismissive (10%)</i>
Which comes closer to your own view? ¹	<i>Most scientists think global warming is happening</i>	39	72	63	38	13	14	4
	<i>Most scientists think global warming is not happening</i>	3	3	0	3	1	3	16
	<i>There is a lot of disagreement among scientists about whether or not global warming is happening</i>	40	23	27	41	28	59	76
	<i>Don't know enough to say</i>	18	3	11	18	58	24	4
To the best of your knowledge, what proportion of climate scientists think that global warming is happening?	<i>81 to 100%</i>	13	36	19	11	1	3	0
	<i>61 to 80%</i>	19	37	26	20	6	7	7
	<i>41 to 60%</i>	23	12	24	28	15	27	27
	<i>21 to 40%</i>	12	2	5	14	10	20	26
	<i>0 to 20%</i>	3	0	1	2	2	3	17
	<i>Don't know enough to say</i>	30	14	25	26	66	39	23
To the best of your knowledge, what proportion of climate scientists think that global warming is caused mostly by human activities?	<i>81 to 100%</i>	15	44	18	12	4	4	5
	<i>61 to 80%</i>	17	20	22	21	6	12	11
	<i>41 to 60%</i>	18	14	24	19	11	21	10
	<i>21 to 40%</i>	12	3	6	15	5	16	27
	<i>0 to 20%</i>	7	2	3	6	8	7	21
	<i>Don't know enough to say</i>	31	18	25	26	66	40	25

¹First and second response option were rotated.

TABLE 6 | Issue Involvement

		<i>National Average</i>	<i>Alarmed (12%)</i>	<i>Concerned (27%)</i>	<i>Cautious (25%)</i>	<i>Disengaged (10%)</i>	<i>Doubtful (15%)</i>	<i>Dismissive (10%)</i>
How important is the issue of global warming to you personally?	<i>Extremely important</i>	8	46	3	1	4	1	2
	<i>Very important</i>	15	44	29	5	6	1	1
	<i>Somewhat important</i>	38	9	60	55	50	9	5
	<i>Not too important</i>	25	0	7	38	31	55	19
	<i>Not at all important</i>	14	1	1	2	9	34	72
How much had you thought about global warming before today?	<i>A lot</i>	13	54	6	2	0	7	27
	<i>Some</i>	34	43	54	23	14	24	28
	<i>A little</i>	38	3	37	59	39	44	21
	<i>Not at all</i>	16	1	3	15	46	26	23
How worried are you about global warming?	<i>Very worried</i>	9	49	8	4	1	0	0
	<i>Somewhat worried</i>	43	49	80	42	42	6	0
	<i>Not very worried</i>	28	1	12	48	46	43	12
	<i>Not at all worried</i>	20	2	0	7	10	51	88
I have personally experienced the effects of global warming	<i>Strongly agree</i>	5	22	5	3	1	1	5
	<i>Somewhat agree</i>	29	48	38	35	25	6	2
	<i>Somewhat disagree</i>	34	18	43	38	40	36	13
	<i>Strongly disagree</i>	32	12	15	25	34	57	80

TABLE 7 | Inferences about Global Warming from Recent Weather

	<i>National Average</i>	<i>Alarmed (12%)</i>	<i>Concerned (27%)</i>	<i>Cautious (25%)</i>	<i>Disengaged (10%)</i>	<i>Doubtful (15%)</i>	<i>Dismissive (10%)</i>
The record snowstorms this winter in the United States make me question whether global warming is occurring.							
<i>Strongly Agree</i>	13	15	8	7	3	17	37
<i>Somewhat Agree</i>	34	17	31	48	60	28	16
<i>Somewhat Disagree</i>	30	15	35	36	30	32	13
<i>Strongly Disagree</i>	23	53	25	9	7	23	35

The record heat waves last summer in the United States strengthened my belief that global warming is occurring.							
<i>Strongly Agree</i>	13	50	17	5	3	2	3
<i>Somewhat Agree</i>	41	33	58	51	57	16	4
<i>Somewhat Disagree</i>	26	7	20	34	32	41	16
<i>Strongly Disagree</i>	20	11	5	10	8	41	77

TABLE 8 | Risk Perceptions: Who Will Be Harmed

How much do you think global warming will harm:		<i>National Average</i>	<i>Alarmed (12%)</i>	<i>Concerned (27%)</i>	<i>Cautious (25%)</i>	<i>Disengaged (10%)</i>	<i>Doubtful (15%)</i>	<i>Dismissive (10%)</i>
You personally	<i>A great deal</i>	11	53	11	7	0	1	0
	<i>A moderate amount</i>	18	25	42	13	0	3	0
	<i>Only a little</i>	28	17	35	54	0	21	0
	<i>Not at all</i>	25	3	5	22	0	53	99
	<i>Don't know</i>	17	3	7	5	100	22	1
Your family	<i>A great deal</i>	13	59	12	8	0	1	0
	<i>A moderate amount</i>	21	28	49	16	0	4	0
	<i>Only a little</i>	26	10	29	53	0	24	0
	<i>Not at all</i>	23	1	2	19	0	50	99
	<i>Don't know</i>	17	3	8	5	100	21	1
Your community	<i>A great deal</i>	12	58	13	5	0	1	0
	<i>A moderate amount</i>	22	28	48	19	0	3	0
	<i>Only a little</i>	26	10	28	55	0	24	0
	<i>Not at all</i>	22	1	3	17	0	45	99
	<i>Don't know</i>	18	3	8	5	100	27	1
People in the United States	<i>A great deal</i>	16	66	22	7	0	1	0
	<i>A moderate amount</i>	26	28	56	29	0	5	0
	<i>Only a little</i>	23	5	17	51	0	33	2
	<i>Not at all</i>	17	0	1	10	1	31	97
	<i>Don't know</i>	17	1	5	5	99	29	1

TABLE 8 | Risk Perceptions: Who Will Be Harmed, Continued

How much do you think global warming will harm:		<i>National Average</i>	<i>Alarmed (12%)</i>	<i>Concerned (27%)</i>	<i>Cautious (25%)</i>	<i>Disengaged (10%)</i>	<i>Doubtful (15%)</i>	<i>Dismissive (10%)</i>
People in other modern industrialized countries	<i>A great deal</i>	17	65	27	6	0	1	0
	<i>A moderate amount</i>	25	27	50	29	0	7	0
	<i>Only a little</i>	23	6	16	50	3	32	2
	<i>Not at all</i>	17	0	2	10	0	27	96
	<i>Don't know</i>	18	2	5	5	97	33	2
People in developing countries	<i>A great deal</i>	23	85	36	10	0	4	0
	<i>A moderate amount</i>	22	9	43	33	0	7	0
	<i>Only a little</i>	20	5	14	44	3	30	1
	<i>Not at all</i>	17	0	1	8	0	28	97
	<i>Don't know</i>	18	1	6	6	97	31	2
Future generations of people	<i>A great deal</i>	38	97	75	18	0	5	0
	<i>A moderate amount</i>	22	3	17	63	0	13	0
	<i>Only a little</i>	10	0	2	17	0	35	2
	<i>Not at all</i>	12	0	1	1	0	10	95
	<i>Don't know</i>	18	1	5	1	100	37	3
Plant and animal species	<i>A great deal</i>	39	98	76	22	1	5	0
	<i>A moderate amount</i>	19	2	17	50	1	13	0
	<i>Only a little</i>	12	0	3	22	3	35	0
	<i>Not at all</i>	13	0	0	4	0	11	99
	<i>Don't know</i>	17	0	5	2	95	35	1

TABLE 9 | Local Risk Perceptions

How much do you think global warming will harm:		<i>National Average</i>	<i>Alarmed (12%)</i>	<i>Concerned (27%)</i>	<i>Cautious (25%)</i>	<i>Disengaged (10%)</i>	<i>Doubtful (15%)</i>	<i>Dismissive (10%)</i>
Crops in your area	<i>A great deal</i>	28	81	47	17	1	5	0
	<i>A moderate amount</i>	23	16	36	37	1	10	0
	<i>Only a little</i>	19	3	10	40	7	32	1
	<i>Not at all</i>	15	0	0	5	0	21	97
	<i>Don't Know</i>	16	0	6	1	91	33	2
Native plants in your area	<i>A great deal</i>	25	81	42	14	1	3	0
	<i>A moderate amount</i>	25	17	40	41	2	11	0
	<i>Only a little</i>	17	3	10	37	4	26	0
	<i>Not at all</i>	16	0	1	6	1	28	99
	<i>Don't Know</i>	17	0	7	2	92	33	1
Wild birds in your area	<i>A great deal</i>	26	81	43	14	1	3	0
	<i>A moderate amount</i>	23	15	38	37	1	8	0
	<i>Only a little</i>	19	3	11	38	7	32	0
	<i>Not at all</i>	16	0	1	8	1	25	99
	<i>Don't Know</i>	17	1	6	2	90	33	1
Wild animals in your area	<i>A great deal</i>	25	79	42	14	1	3	0
	<i>A moderate amount</i>	23	17	38	38	1	9	0
	<i>Only a little</i>	18	4	13	37	5	29	0
	<i>Not at all</i>	16	0	1	8	1	26	99
	<i>Don't Know</i>	17	0	6	3	92	33	1

TABLE 9 | Local Risk Perceptions, Continued

		<i>National Average</i>	<i>Alarmed (12%)</i>	<i>Concerned (27%)</i>	<i>Cautious (25%)</i>	<i>Disengaged (10%)</i>	<i>Doubtful (15%)</i>	<i>Dismissive (10%)</i>
How much do you think global warming will harm:								
Outdoor recreational places (e.g., parks, beaches, lakes, rivers, forests) in your area	<i>A great deal</i>	20	73	32	7	2	3	0
	<i>A moderate amount</i>	24	17	44	35	0	7	1
	<i>Only a little</i>	20	8	16	43	2	25	1
	<i>Not at all</i>	18	0	2	12	0	32	97
	<i>Don't Know</i>	18	2	6	4	96	33	1
Pets in your area	<i>A great deal</i>	20	64	29	14	0	3	0
	<i>A moderate amount</i>	19	19	34	25	2	6	0
	<i>Only a little</i>	22	14	22	42	5	24	0
	<i>Not at all</i>	21	3	7	15	0	33	99
	<i>Don't Know</i>	18	1	8	4	93	35	1
Public property (e.g., roads, schools, sewer systems and public buildings) in your area	<i>A great deal</i>	13	52	15	7	1	1	0
	<i>A moderate amount</i>	20	27	41	21	0	4	1
	<i>Only a little</i>	22	11	24	43	2	24	1
	<i>Not at all</i>	26	4	12	23	0	41	97
	<i>Don't Know</i>	19	6	9	5	97	30	1
People's private property (e.g., homes, cars, boats) in your area	<i>A great deal</i>	11	47	14	5	0	1	1
	<i>A moderate amount</i>	18	25	35	19	1	4	0
	<i>Only a little</i>	25	17	26	45	2	25	1
	<i>Not at all</i>	27	7	14	25	0	40	97
	<i>Don't Know</i>	19	4	10	5	97	30	1

TABLE 10| Concern about Health Impacts of Global Warming

		<i>National Average</i>	<i>Alarmed (12%)</i>	<i>Concerned (27%)</i>	<i>Cautious (25%)</i>	<i>Disengaged (10%)</i>	<i>Doubtful (15%)</i>	<i>Dismissive (10%)</i>
How concerned are you about the impact of global warming on your health?	<i>Extremely concerned - 7</i>	10	43	10	3	10	2	0
	6	8	17	17	2	7	1	0
	5	14	16	28	13	11	0	0
	4	18	12	21	22	36	10	1
	3	12	7	13	20	11	13	0
	2	13	2	8	26	7	20	1
	<i>Not at all concerned - 1</i>	25	5	3	13	17	54	98
How concerned are you about the impact of global warming on the health of other Americans?	<i>Extremely concerned - 7</i>	11	46	14	4	8	0	0
	6	8	20	15	3	6	1	0
	5	16	18	30	14	13	3	0
	4	17	8	18	27	36	9	0
	3	12	4	13	18	9	14	0
	2	12	1	6	24	11	20	4
	<i>Not at all concerned - 1</i>	24	3	3	11	17	54	96

TABLE 11 | Risk Perceptions: Human Health Impacts Expected from Global Warming

In the United States over the next 20 years, do you think global warming will cause more or less of the following, if nothing is done to address it¹

		<i>National Average</i>	<i>Alarmed (12%)</i>	<i>Concerned (27%)</i>	<i>Cautious (25%)</i>	<i>Disengaged (10%)</i>	<i>Doubtful (15%)</i>	<i>Dismissive (10%)</i>
Deaths and injuries from floods	<i>Many more</i>	31	81	55	20	9	3	0
	<i>A few more</i>	24	9	31	41	12	18	1
	<i>No difference</i>	24	0	5	23	10	51	80
	<i>A few less</i>	1	0	0	2	3	3	0
	<i>Many less</i>	2	3	1	1	0	0	8
	<i>Don't Know</i>	18	8	7	13	66	25	11
Deaths and injuries from hurricanes	<i>Many more</i>	30	76	52	19	12	3	0
	<i>A few more</i>	25	12	32	43	14	19	0
	<i>No difference</i>	23	0	6	20	6	49	79
	<i>A few less</i>	1	2	1	3	0	1	0
	<i>Many less</i>	2	1	1	2	0	1	8
	<i>Don't Know</i>	19	9	8	13	67	27	13
Deaths and injuries from severe winter storms	<i>Many more</i>	29	75	51	16	14	2	0
	<i>A few more</i>	25	15	31	42	13	17	0
	<i>No difference</i>	25	2	7	24	7	53	79
	<i>A few less</i>	1	0	0	2	0	2	0
	<i>Many less</i>	2	1	1	3	1	1	8
	<i>Don't Know</i>	18	8	9	12	64	25	13

¹The order of the nine types of impact was randomized in the survey; they are listed here from highest to lowest expected impact.

TABLE 11| Risk Perceptions: Human Health Impacts Expected from Global Warming, Continued

In the United States over the next 20 years, do you think global warming will cause more or less of the following, if nothing is done to address it ¹		National Average	Alarmed (12%)	Concerned (27%)	Cautious (25%)	Disengaged (10%)	Doubtful (15%)	Dismissive (10%)
Deaths and injuries from wildfires	<i>Many more</i>	26	72	45	16	7	3	1
	<i>A few more</i>	28	20	36	44	18	16	0
	<i>No difference</i>	26	3	9	23	12	52	79
	<i>A few less</i>	1	0	0	3	1	0	0
	<i>Many less</i>	2	1	1	2	0	0	8
	<i>Don't Know</i>	18	4	9	12	62	28	12
Heat stroke	<i>Many more</i>	26	71	46	13	7	3	0
	<i>A few more</i>	27	15	36	42	20	18	2
	<i>No difference</i>	25	4	6	26	6	50	77
	<i>A few less</i>	1	2	2	2	0	1	0
	<i>Many less</i>	2	2	1	2	0	0	8
	<i>Don't Know</i>	19	6	8	15	66	28	13
Increased malnutrition as a result of spikes in food prices	<i>Many more</i>	27	74	49	17	8	2	0
	<i>A few more</i>	23	13	29	37	15	19	1
	<i>No difference</i>	26	4	8	28	6	48	78
	<i>A few less</i>	2	0	1	5	0	1	0
	<i>Many less</i>	2	1	1	1	1	0	8
	<i>Don't Know</i>	20	9	12	13	69	29	13

¹The order of the nine types of impact was randomized in the survey; they are listed here from highest to lowest expected impact.

TABLE 11 | Risk Perceptions: Human Health Impacts Expected from Global Warming, Continued

In the United States over the next 20 years, do you think global warming will cause more or less of the following, if nothing is done to address it¹

		<i>National Average</i>	<i>Alarmed (12%)</i>	<i>Concerned (27%)</i>	<i>Cautious (25%)</i>	<i>Disengaged (10%)</i>	<i>Doubtful (15%)</i>	<i>Dismissive (10%)</i>
Asthma and other diseases of the lungs	<i>Many more</i>	24	69	40	12	11	3	0
	<i>A few more</i>	23	11	34	40	11	10	0
	<i>No difference</i>	27	5	10	28	9	55	78
	<i>A few less</i>	2	0	2	4	0	1	0
	<i>Many less</i>	2	3	1	2	1	1	8
	<i>Don't Know</i>	22	13	13	15	68	31	14
Diseases carried by insects, such as Lyme disease, West Nile virus and dengue fever	<i>Many more</i>	21	68	33	12	10	1	0
	<i>A few more</i>	25	17	34	37	13	16	1
	<i>No difference</i>	30	4	16	32	8	53	78
	<i>A few less</i>	1	2	2	3	0	0	0
	<i>Many less</i>	2	1	1	2	0	0	8
	<i>Don't Know</i>	21	8	14	14	68	30	13
Cholera and other diseases carried by infected water	<i>Many more</i>	22	63	36	13	7	1	0
	<i>A few more</i>	22	14	34	34	10	12	0
	<i>No difference</i>	31	8	18	32	5	56	79
	<i>A few less</i>	1	0	1	4	0	0	0
	<i>Many less</i>	2	3	1	1	3	1	8
	<i>Don't Know</i>	21	13	10	15	74	30	13

¹The order of the nine types of impact was randomized in the survey; they are listed here from highest to lowest expected impact.

TABLE 12| Beliefs about Current Environmental Impacts of Global Warming in the U.S.

Some people say that global warming is already impacting the United States. Do you agree or disagree that global warming is already causing or making the following things worse, or do you not know?

		<i>National Average</i>	<i>Alarmed (12%)</i>	<i>Concerned (27%)</i>	<i>Cautious (25%)</i>	<i>Disengaged (10%)</i>	<i>Doubtful (15%)</i>	<i>Dismissive (10%)</i>
Droughts	<i>Strongly agree</i>	19	68	30	9	3	1	0
	<i>Somewhat agree</i>	31	20	50	45	17	16	1
	<i>Somewhat disagree</i>	13	3	6	21	5	26	14
	<i>Strongly disagree</i>	14	5	2	2	2	26	76
	<i>Don't know</i>	22	4	13	23	72	30	9
Hurricanes	<i>Strongly agree</i>	19	66	28	12	4	1	0
	<i>Somewhat agree</i>	30	21	51	42	15	11	1
	<i>Somewhat disagree</i>	14	3	6	20	7	34	13
	<i>Strongly disagree</i>	14	5	2	3	5	23	77
	<i>Don't know</i>	22	4	13	22	69	31	9
Wildfires	<i>Strongly agree</i>	18	63	26	9	4	1	0
	<i>Somewhat agree</i>	28	26	50	34	17	9	0
	<i>Somewhat disagree</i>	16	2	8	28	6	29	13
	<i>Strongly disagree</i>	15	6	3	5	2	23	78
	<i>Don't know</i>	24	3	14	25	71	37	9

TABLE 12 | Beliefs about Current Environmental Impacts of Global Warming in the U.S., Cont

Some people say that global warming is already impacting the United States. Do you agree or disagree that global warming is already causing or making the following things worse, or do you not know?

		<i>National Average</i>	<i>Alarmed (12%)</i>	<i>Concerned (27%)</i>	<i>Cautious (25%)</i>	<i>Disengaged (10%)</i>	<i>Doubtful (15%)</i>	<i>Dismissive (10%)</i>
Coastline erosion and flooding	<i>Strongly agree</i>	17	63	26	8	2	1	0
	<i>Somewhat agree</i>	35	27	57	49	18	13	1
	<i>Somewhat disagree</i>	12	3	5	16	5	27	13
	<i>Strongly disagree</i>	14	5	1	4	3	24	77
	<i>Don't know</i>	22	3	10	23	71	35	9
Rivers flooding	<i>Strongly agree</i>	17	55	24	12	2	1	0
	<i>Somewhat agree</i>	31	34	52	37	16	14	0
	<i>Somewhat disagree</i>	14	2	10	20	6	27	14
	<i>Strongly disagree</i>	14	5	1	5	2	24	77
	<i>Don't know</i>	24	3	13	26	73	34	9
Damage from pine-bark beetles	<i>Strongly agree</i>	9	29	14	4	4	1	0
	<i>Somewhat agree</i>	17	19	29	22	3	6	0
	<i>Somewhat disagree</i>	15	9	11	22	6	25	13
	<i>Strongly disagree</i>	14	3	2	5	3	24	74
	<i>Don't know</i>	45	40	45	46	84	44	13

TABLE 13 | Risk Perceptions: When Harm Will Occur

When do you think global warming will start to harm people in the United States?	National Average	Alarmed (12%)	Concerned (27%)	Cautious (25%)	Disengaged (10%)	Doubtful (15%)	Dismissive (10%)
<i>They are being harmed now</i>	32	79	50	18	36	1	0
<i>In 10 years</i>	12	8	16	19	8	5	0
<i>In 25 years</i>	13	7	20	22	9	5	1
<i>In 50 years</i>	12	3	12	18	19	13	0
<i>In 100 years</i>	11	3	2	20	10	25	4
<i>Never</i>	20	0	0	3	17	51	95

When do you think global warming will start to harm other people around the world?

<i>They are being harmed now</i>	35	87	53	21	35	3	0
<i>In 10 years</i>	12	8	17	19	11	5	0
<i>In 25 years</i>	11	3	16	19	9	5	0
<i>In 50 years</i>	12	2	11	21	18	14	1
<i>In 100 years</i>	10	1	2	18	8	24	4
<i>Never</i>	20	0	0	3	18	48	95

TABLE 14 | Mitigation Efficacy: Perceptions about the Effectiveness of Collective and Individual Action

Which of the following statements comes closest to your view? ¹		National Average	Alarmed (12%)	Concerned (27%)	Cautious (25%)	Disengaged (10%)	Doubtful (15%)	Dismissive (10%)
<i>Humans can reduce global warming, and we are going to do so successfully</i>		5	9	6	6	3	1	1
<i>Humans could reduce global warming, but it's unclear at this point whether we will do what's needed</i>		41	63	55	53	40	9	1
<i>Humans could reduce global warming, but people aren't willing to change their behavior, so we're not going to</i>		25	28	34	31	29	10	0
<i>Humans can't reduce global warming, even if it is happening</i>		18	1	3	10	20	60	38
<i>Global warming isn't happening</i>		11	0	1	1	7	21	60
"The actions of a single individual won't make any difference in global warming."	<i>Strongly Agree</i>	14	8	7	11	2	25	48
	<i>Somewhat Agree</i>	31	18	23	35	47	42	24
	<i>Somewhat Disagree</i>	36	25	44	46	42	25	15
	<i>Strongly Disagree</i>	19	49	26	8	9	9	13
"New technologies can solve global warming, without individuals having to make big changes in their lives."	<i>Strongly Agree</i>	7	15	6	5	1	6	11
	<i>Somewhat Agree</i>	40	18	38	52	48	44	24
	<i>Somewhat Disagree</i>	33	23	38	35	37	33	20
	<i>Strongly Disagree</i>	21	44	17	8	14	17	45

¹Half the respondents saw the response order shown here; half saw the reverse order, with "global warming isn't happening" at the top.

TABLE 14 | Mitigation Efficacy: Perceptions about the Effectiveness of Collective and Individual Action

Thinking about the energy-saving actions you're already taking and those you'd like to take over the next 12 months: ¹		National Average	Alarmed (12%)	Concerned (27%)	Cautious (25%)	Disengaged (10%)	Doubtful (15%)	Dismissive (10%)
If you did most of these things, how much do you think it would reduce your personal contribution to global warming?	<i>A lot</i>	6	22	7	4	2	1	0
	<i>Some</i>	26	37	37	21	23	7	14
	<i>A little</i>	48	35	51	63	44	36	19
	<i>Not at all</i>	20	6	6	13	30	56	68
If most people in the United States did these same actions, how much would it reduce global warming?	<i>A lot</i>	26	61	36	16	17	4	0
	<i>Some</i>	34	28	44	39	39	8	16
	<i>A little</i>	27	12	16	41	30	43	14
	<i>Not at all</i>	13	0	5	4	14	44	70
If most people in the modern industrialized countries around the world did these same actions, how much would it reduce global warming?	<i>A lot</i>	40	74	61	30	26	3	3
	<i>Some</i>	31	21	31	41	38	19	11
	<i>A little</i>	19	5	7	23	28	40	35
	<i>Not at all</i>	10	0	2	7	7	38	51

¹Questions were not asked of respondents who said they were very or extremely sure that global warming is not occurring. N=880.

TABLE 15 | Trust in Information Sources

How much do you trust or distrust the following as a source of information about global warming? ¹		<i>National Average</i>	<i>Alarmed (12%)</i>	<i>Concerned (27%)</i>	<i>Cautious (25%)</i>	<i>Disengaged (10%)</i>	<i>Doubtful (15%)</i>	<i>Dismissive (10%)</i>
The National Oceanic and Atmospheric Administration (NOAA)	<i>Strongly trust</i>	22	57	35	14	6	4	3
	<i>Somewhat trust</i>	54	38	57	66	73	49	22
	<i>Somewhat distrust</i>	19	3	6	15	20	37	49
	<i>Strongly distrust</i>	6	2	1	5	1	11	26
Scientists	<i>Strongly trust</i>	21	50	29	22	6	2	5
	<i>Somewhat trust</i>	55	45	62	60	75	47	25
	<i>Somewhat distrust</i>	19	4	8	16	16	41	47
	<i>Strongly distrust</i>	5	1	2	3	3	10	22
The U.S. Environmental Protection Agency (EPA)	<i>Strongly trust</i>	14	37	25	7	4	3	1
	<i>Somewhat trust</i>	54	49	58	67	70	44	18
	<i>Somewhat distrust</i>	23	8	15	21	22	41	47
	<i>Strongly distrust</i>	8	6	2	5	4	12	34
The U.S. Centers for Disease Control & Prevention (CDC)	<i>Strongly trust</i>	15	43	23	9	5	3	0
	<i>Somewhat trust</i>	47	39	56	59	65	32	12
	<i>Somewhat distrust</i>	26	13	17	25	28	49	26
	<i>Strongly distrust</i>	13	5	4	7	2	17	62

¹Order of the 10 sources was randomized in the survey. Sources are listed here from most to least strongly trusted.

TABLE 15 | Trust in Information Sources, Continued

How much do you trust or distrust the following as a source of information about global warming? ¹		<i>National Average</i>	<i>Alarmed (12%)</i>	<i>Concerned (27%)</i>	<i>Cautious (25%)</i>	<i>Disengaged (10%)</i>	<i>Doubtful (15%)</i>	<i>Dismissive (10%)</i>
The National Park Service	<i>Strongly trust</i>	13	34	20	6	2	6	0
	<i>Somewhat trust</i>	62	58	68	73	69	55	24
	<i>Somewhat distrust</i>	20	6	10	18	27	28	51
	<i>Strongly distrust</i>	6	3	2	3	2	11	25
The U.S. Department of Energy (DOE)	<i>Strongly trust</i>	11	25	17	9	3	3	1
	<i>Somewhat trust</i>	48	53	58	54	65	30	10
	<i>Somewhat distrust</i>	28	16	22	27	27	45	36
	<i>Strongly distrust</i>	13	6	3	11	5	21	53
President Obama	<i>Strongly trust</i>	11	34	17	6	4	3	0
	<i>Somewhat trust</i>	35	40	45	37	58	18	3
	<i>Somewhat distrust</i>	24	8	24	36	25	26	13
	<i>Strongly distrust</i>	30	19	14	22	13	53	84
Television weather reporters	<i>Strongly trust</i>	5	16	6	5	2	1	2
	<i>Somewhat trust</i>	47	55	58	48	60	36	8
	<i>Somewhat distrust</i>	34	21	28	37	29	44	46
	<i>Strongly distrust</i>	14	8	8	10	8	18	43

¹Order of the 10 sources was randomized in the survey. Sources are listed here from most to least strongly trusted.

TABLE 15 | Trust in Information Sources, Continued

How much do you trust or distrust the following as a source of information about global warming? ¹		<i>National Average</i>	<i>Alarmed (12%)</i>	<i>Concerned (27%)</i>	<i>Cautious (25%)</i>	<i>Disengaged (10%)</i>	<i>Doubtful (15%)</i>	<i>Dismissive (10%)</i>
The mainstream news media	<i>Strongly trust</i>	4	8	5	3	4	2	0
	<i>Somewhat trust</i>	34	50	47	32	47	14	3
	<i>Somewhat distrust</i>	37	29	31	48	42	44	24
	<i>Strongly distrust</i>	25	13	17	17	7	40	74
Your U.S. Congressman/Congresswoman	<i>Strongly trust</i>	2	6	3	1	2	0	3
	<i>Somewhat trust</i>	34	36	42	38	47	21	11
	<i>Somewhat distrust</i>	39	33	41	41	42	40	35
	<i>Strongly distrust</i>	24	26	14	20	9	39	51

¹Order of the 10 sources was randomized in the survey. Sources are listed here from most to least strongly trusted.

TABLE 16 | National Issue Priorities

Do you think global warming should be a low, medium, high, or very high priority for the president and Congress?	National Average	Alarmed (12%)	Concerned (27%)	Cautious (25%)	Disengaged (10%)	Doubtful (15%)	Dismissive (10%)
<i>Very high</i>	13	64	15	3	6	2	0
<i>High</i>	26	32	53	19	26	3	0
<i>Medium</i>	31	4	28	58	49	17	1
<i>Low</i>	30	0	4	19	19	77	99

Do you think that developing sources of clean energy should be a low, medium, high, or very high priority for the president and Congress?

<i>Very high</i>	31	79	43	21	15	11	10
<i>High</i>	35	19	47	40	43	28	14
<i>Medium</i>	25	2	9	34	30	49	30
<i>Low</i>	9	0	0	5	11	12	45

TABLE 17 | Support for a National Response: Conditions for & Magnitude of Action Desired

People disagree whether the United States should reduce greenhouse gas emissions on its own, or make reductions only if other countries do too. Which of the following statements comes closest to your own point of view?
The United States should reduce its greenhouse gas emissions ...

	<i>National Average</i>	<i>Alarmed (12%)</i>	<i>Concerned (27%)</i>	<i>Cautious (25%)</i>	<i>Disengaged (10%)</i>	<i>Doubtful (15%)</i>	<i>Dismissive (10%)</i>
<i>Regardless of what other countries do</i>	61	89	90	62	29	38	15
<i>Only if other industrialized countries (such as England, Germany and Japan) reduce their emissions</i>	2	1	1	5	2	3	0
<i>Only if other industrialized countries and developing countries (such as China, India and Brazil) reduce their emissions</i>	8	3	1	11	4	18	11
<i>The US should not reduce its emissions</i>	6	2	0	2	0	5	46
<i>Don't know</i>	23	6	7	20	65	36	27

How big of an effort should the United States make to reduce global warming?

<i>A large-scale effort, even if it has large economic costs</i>	28	80	45	16	24	1	0
<i>A medium-scale effort, even if it has moderate economic costs</i>	38	19	50	56	44	19	5
<i>A small-scale effort, even if it has small economic costs</i>	19	1	4	26	18	52	17
<i>No effort</i>	14	0	0	2	14	28	78

TABLE 18 | Support for a National Response: Specific Climate and Energy Policies

How much do you support or oppose the following policies?		National Average	Alarmed (12%)	Concerned (27%)	Cautious (25%)	Disengaged (10%)	Doubtful (15%)	Dismissive (10%)
Require electric utilities to produce at least 20% of their electricity from wind, solar, or other renewable energy sources, even if it cost the average household an extra \$100 a year.	<i>Strongly support</i>	23	67	33	16	7	8	1
	<i>Somewhat support</i>	43	23	50	53	49	38	22
	<i>Somewhat oppose</i>	18	3	13	23	27	32	11
	<i>Strongly oppose</i>	16	8	4	8	16	22	66
Sign an international treaty that requires the United States to cut its emissions of carbon dioxide 90% by the year 2050.	<i>Strongly support</i>	23	69	34	12	12	5	0
	<i>Somewhat support</i>	43	24	52	56	57	31	12
	<i>Somewhat oppose</i>	17	3	11	24	23	30	7
	<i>Strongly oppose</i>	17	3	3	8	7	34	81
Expand offshore drilling for oil and natural gas off the U.S. coast.	<i>Strongly support</i>	28	22	20	19	13	44	68
	<i>Somewhat support</i>	38	23	36	48	61	34	18
	<i>Somewhat oppose</i>	20	21	29	23	18	15	3
	<i>Strongly oppose</i>	14	34	15	11	8	7	11
Build more nuclear power plants.	<i>Strongly support</i>	16	12	11	14	2	22	43
	<i>Somewhat support</i>	31	29	22	28	55	39	31
	<i>Somewhat oppose</i>	30	18	37	39	26	26	10
	<i>Strongly oppose</i>	23	41	30	19	17	13	16

TABLE 18 | Support for a National Response: Specific Climate and Energy Policies, Continued

How much do you support or oppose the following policies?		National Average	Alarmed (12%)	Concerned (27%)	Cautious (25%)	Disengaged (10%)	Doubtful (15%)	Dismissive (10%)
Fund more research into renewable energy sources, such as solar and wind power.	<i>Strongly support</i>	47	85	66	41	22	26	20
	<i>Somewhat support</i>	37	7	32	45	56	46	36
	<i>Somewhat oppose</i>	11	5	1	11	18	19	21
	<i>Strongly oppose</i>	6	3	1	3	5	9	22
Provide tax rebates for people who purchase energy-efficient vehicles or solar panels.	<i>Strongly support</i>	41	73	58	35	22	25	13
	<i>Somewhat support</i>	41	22	37	51	61	37	34
	<i>Somewhat oppose</i>	10	1	4	10	9	21	18
	<i>Strongly oppose</i>	9	4	1	4	7	16	35
Increase taxes on gasoline by 25 cents per gallon and return the revenues to taxpayers by reducing the federal income tax.	<i>Strongly support</i>	8	19	12	6	4	7	1
	<i>Somewhat support</i>	24	32	26	26	34	12	11
	<i>Somewhat oppose</i>	27	25	31	35	31	22	8
	<i>Strongly oppose</i>	40	25	32	33	30	59	80

TABLE 19 | Support for Local Climate and Energy Policies

How much do you support or oppose the following policies for your local community? ¹		National Average	Alarmed (12%)	Concerned (27%)	Cautious (25%)	Disengaged (10%)	Doubtful (15%)	Dismissive (10%)
Constructing bike paths and installing bike lanes on city streets	<i>Strongly support</i>	30	67	35	26	9	18	21
	<i>Somewhat support</i>	47	26	49	54	64	43	39
	<i>Somewhat oppose</i>	14	5	8	17	20	22	18
	<i>Strongly oppose</i>	9	3	8	3	8	17	23
Increasing the availability of public transportation in your county.	<i>Strongly support</i>	29	65	34	22	23	17	15
	<i>Somewhat support</i>	51	31	53	58	56	49	48
	<i>Somewhat oppose</i>	13	2	9	18	16	17	12
	<i>Strongly oppose</i>	8	3	4	3	5	16	24
Regulations requiring any new home to be more energy efficient. This would increase the initial cost by about \$7,500, but save about \$17,000 in utility bills over 30 years.	<i>Strongly support</i>	24	63	34	15	14	9	1
	<i>Somewhat support</i>	47	26	52	58	59	42	30
	<i>Somewhat oppose</i>	16	4	7	22	18	27	17
	<i>Strongly oppose</i>	13	7	7	5	9	21	52
Changing your county's zoning rules to require that neighborhoods have a mix of housing, offices, industry, schools, and stores close together, to encourage walking and decrease the need for a car.	<i>Strongly support</i>	17	48	21	14	11	5	5
	<i>Somewhat support</i>	40	38	52	38	49	33	20
	<i>Somewhat oppose</i>	24	8	18	34	28	30	19
	<i>Strongly oppose</i>	18	6	9	14	11	32	56

¹The order of the 12 policies was randomized in the survey. Policies are listed here from most to least supported.

TABLE 19 | Support for Local Climate and Energy Policies, Continued

How much do you support or oppose the following policies for your local community? ¹		National Average	Alarmed (12%)	Concerned (27%)	Cautious (25%)	Disengaged (10%)	Doubtful (15%)	Dismissive (10%)
Changing your county's zoning rules to decrease suburban sprawl and concentrate new development near the center of cities and towns, reducing commuting times	<i>Strongly support</i>	15	45	18	11	8	5	3
	<i>Somewhat support</i>	41	37	51	41	46	35	27
	<i>Somewhat oppose</i>	27	12	23	39	37	28	16
	<i>Strongly oppose</i>	17	7	8	10	8	32	54
Changing your county's zoning rules to promote the construction of more energy-efficient apartment buildings, instead of less efficient single-family homes	<i>Strongly support</i>	14	43	19	8	10	5	0
	<i>Somewhat support</i>	37	31	40	46	47	30	18
	<i>Somewhat oppose</i>	28	17	29	32	33	33	21
	<i>Strongly oppose</i>	20	9	11	15	11	32	61
Paying 5% more on your monthly utility bill to get your electricity from renewable energy sources, like wind or solar	<i>Strongly support</i>	14	58	19	5	5	0	0
	<i>Somewhat support</i>	37	29	44	53	38	21	11
	<i>Somewhat oppose</i>	24	7	25	26	31	31	19
	<i>Strongly oppose</i>	25	7	12	15	26	48	70
A \$5-a-month increase in property taxes, to provide funding to help homeowners make energy-efficiency improvements to their homes (such as replacing old, inefficient furnaces, water heaters, air conditioners, and insulation)	<i>Strongly support</i>	12	45	15	6	7	3	0
	<i>Somewhat support</i>	33	34	43	39	37	15	13
	<i>Somewhat oppose</i>	24	9	23	32	34	26	12
	<i>Strongly oppose</i>	31	12	19	23	22	56	74

¹The order of the 12 policies was randomized in the survey. Policies are listed here from most to least supported.

TABLE 19 | Support for Local Climate and Energy Policies, Continued

How much do you support or oppose the following policies for your local community? ¹		National Average	Alarmed (12%)	Concerned (27%)	Cautious (25%)	Disengaged (10%)	Doubtful (15%)	Dismissive (10%)
A \$5-a-month increase in property taxes, to provide funding to homeowners that install solar panels	<i>Strongly support</i>	12	37	18	6	5	3	3
	<i>Somewhat support</i>	29	39	35	33	35	15	9
	<i>Somewhat oppose</i>	27	10	29	38	33	28	14
	<i>Strongly oppose</i>	31	13	19	23	26	55	73
A \$1.50 fee added to your monthly electric utility bill to fund local programs to save energy	<i>Strongly support</i>	11	44	13	5	5	2	0
	<i>Somewhat support</i>	37	42	46	49	37	15	13
	<i>Somewhat oppose</i>	25	6	27	28	34	34	12
	<i>Strongly oppose</i>	27	8	14	18	24	49	74
Building a nuclear power plant in your local area	<i>Strongly support</i>	8	7	4	8	5	9	26
	<i>Somewhat support</i>	25	21	18	26	31	34	31
	<i>Somewhat oppose</i>	23	17	18	30	28	23	23
	<i>Strongly oppose</i>	43	55	60	36	36	34	21
A 10-cent fee added to each gallon of gasoline you buy, to fund local programs to improve public transportation	<i>Strongly support</i>	7	27	10	2	2	1	0
	<i>Somewhat support</i>	20	31	23	25	21	8	5
	<i>Somewhat oppose</i>	27	14	31	31	42	21	14
	<i>Strongly oppose</i>	46	28	36	42	35	70	81

¹The order of the 12 policies was randomized in the survey. Policies are listed here from most to least supported.

TABLE 20 | Perceived Importance of Protecting Local Resources

The federal government is encouraging communities to prepare for the impacts of global warming so that people and property are protected. How important do you think is it for *your community* to take steps to protect the following from global warming?

		<i>National Average</i>	<i>Alarmed (12%)</i>	<i>Concerned (27%)</i>	<i>Cautious (25%)</i>	<i>Disengaged (10%)</i>	<i>Doubtful (15%)</i>	<i>Dismissive (10%)</i>
The water supply	<i>Extremely important</i>	36	69	54	30	26	11	7
	<i>Very important</i>	26	21	30	36	33	21	4
	<i>Somewhat important</i>	18	3	10	25	21	33	13
	<i>Not too important</i>	6	0	4	3	1	17	14
	<i>Not at all important</i>	9	1	0	3	5	14	54
	<i>Does not apply to my community</i>	5	6	2	4	14	4	8
The public's health	<i>Extremely important</i>	33	66	48	28	27	10	5
	<i>Very important</i>	29	22	38	37	34	20	5
	<i>Somewhat important</i>	19	9	10	26	22	34	14
	<i>Not too important</i>	7	0	3	3	1	19	17
	<i>Not at all important</i>	9	0	0	3	4	15	54
	<i>Does not apply to my community</i>	3	3	0	4	12	2	5
Agriculture	<i>Extremely important</i>	33	66	50	25	28	11	5
	<i>Very important</i>	29	22	37	41	28	17	3
	<i>Somewhat important</i>	17	4	9	23	20	32	14
	<i>Not too important</i>	6	3	1	3	4	21	14
	<i>Not at all important</i>	9	0	0	3	4	13	55
	<i>Does not apply to my community</i>	6	6	3	5	15	6	9

¹The protective actions are listed from the resources most to least important to protect.

TABLE 20 | Perceived Importance of Protecting Local Resources, Continued

The federal government is encouraging communities to prepare for the impacts of global warming so that people and property are protected. How important do you think is it for *your community* to take steps to protect the following from global warming?

		<i>National Average</i>	<i>Alarmed (12%)</i>	<i>Concerned (27%)</i>	<i>Cautious (25%)</i>	<i>Disengaged (10%)</i>	<i>Doubtful (15%)</i>	<i>Dismissive (10%)</i>
Forests	<i>Extremely important</i>	31	66	48	24	21	9	5
	<i>Very important</i>	25	19	34	34	29	16	1
	<i>Somewhat important</i>	19	3	11	27	25	35	10
	<i>Not too important</i>	6	1	0	4	3	16	19
	<i>Not at all important</i>	9	1	0	3	4	15	53
	<i>Does not apply to my community</i>	9	10	6	9	18	9	12
Wildlife	<i>Extremely important</i>	30	63	44	26	26	6	7
	<i>Very important</i>	28	25	37	34	29	21	1
	<i>Somewhat important</i>	19	3	16	29	23	25	11
	<i>Not too important</i>	8	2	2	5	2	26	20
	<i>Not at all important</i>	9	1	0	3	4	14	53
	<i>Does not apply to my community</i>	6	6	2	4	16	7	8
Coastlines	<i>Extremely important</i>	28	55	43	25	23	7	1
	<i>Very important</i>	24	18	32	27	28	19	6
	<i>Somewhat important</i>	16	4	9	22	21	29	10
	<i>Not too important</i>	6	0	1	4	3	19	16
	<i>Not at all important</i>	9	1	1	4	4	15	49
	<i>Does not apply to my community</i>	17	22	14	19	21	11	18

¹The protective actions are listed from the resources most to least important to protect.

TABLE 20 | Perceived Importance of Protecting Local Resources, Continued

The federal government is encouraging communities to prepare for the impacts of global warming so that people and property are protected. How important do you think it is for *your community* to take steps to protect the following from global warming?

		<i>National Average</i>	<i>Alarmed (12%)</i>	<i>Concerned (27%)</i>	<i>Cautious (25%)</i>	<i>Disengaged (10%)</i>	<i>Doubtful (15%)</i>	<i>Dismissive (10%)</i>
The sewer system	<i>Extremely important</i>	26	59	35	22	21	9	7
	<i>Very important</i>	26	23	36	34	31	12	5
	<i>Somewhat important</i>	22	6	18	30	21	38	12
	<i>Not too important</i>	8	2	3	8	6	21	13
	<i>Not at all important</i>	10	4	1	3	5	15	52
	<i>Does not apply to my community</i>	7	6	7	3	15	5	10
Public property	<i>Extremely important</i>	19	51	24	14	18	4	2
	<i>Very important</i>	28	21	39	35	32	14	7
	<i>Somewhat important</i>	27	18	26	35	30	29	13
	<i>Not too important</i>	12	8	7	8	2	31	17
	<i>Not at all important</i>	10	0	1	4	4	18	56
	<i>Does not apply to my community</i>	4	1	3	4	14	4	5

¹The protective actions are listed from the resources most to least important to protect.

TABLE 21 | Energy Conservation Actions

How often do you do the following		National Average	Alarmed (12%)	Concerned (27%)	Cautious (25%)	Disengaged (10%)	Doubtful (15%)	Dismissive (10%)
In the winter, set the thermostat to 68 degrees or cooler	<i>Always</i>	26	35	31	23	15	26	24
	<i>Often</i>	19	19	19	16	23	22	22
	<i>Sometimes</i>	18	12	18	21	20	17	16
	<i>Rarely</i>	12	10	13	13	8	11	12
	<i>Never</i>	15	14	9	18	21	14	16
	<i>Not Applicable</i>	10	10	10	9	14	10	9
Use public transportation or car pool	<i>Always</i>	6	13	6	3	15	4	3
	<i>Often</i>	8	13	10	5	8	4	7
	<i>Sometimes</i>	12	15	13	12	9	7	12
	<i>Rarely</i>	20	16	22	27	16	17	15
	<i>Never</i>	40	33	34	40	37	52	46
	<i>Not Applicable</i>	14	11	14	13	16	16	18
Walk or bike instead of driving	<i>Always</i>	5	10	2	2	11	7	3
	<i>Often</i>	10	21	15	8	8	2	5
	<i>Sometimes</i>	18	21	21	19	16	16	13
	<i>Rarely</i>	24	23	24	31	15	21	20
	<i>Never</i>	32	22	27	32	34	41	45
	<i>Not Applicable</i>	10	4	11	8	16	13	14
How many of the light bulbs in your home are energy-efficient compact fluorescent lights (CFLs)?	<i>All</i>	18	30	22	14	16	15	12
	<i>Most</i>	34	30	42	37	26	26	34
	<i>Some</i>	19	17	15	21	29	17	16
	<i>A few</i>	14	13	10	15	9	25	16
	<i>None</i>	10	6	9	11	14	9	17
	<i>I don't know</i>	4	4	2	3	6	9	4

TABLE 22 | Energy Conservation Intentions

For each of the actions below, over the next 12 months, would you like to do this more frequently than you are now, less frequently than you are now, or about the same as you are now?

		<i>National Average</i>	<i>Alarmed (12%)</i>	<i>Concerned (27%)</i>	<i>Cautious (25%)</i>	<i>Disengaged (10%)</i>	<i>Doubtful (15%)</i>	<i>Dismissive (10%)</i>
In the winter, set the thermostat to 68 degrees or cooler	<i>More frequently</i>	17	15	21	18	15	13	14
	<i>About the same</i>	73	78	70	71	62	80	77
	<i>Less frequently</i>	10	7	9	11	23	8	9
Use public transportation or car pool	<i>More frequently</i>	18	30	21	15	14	11	11
	<i>About the same</i>	63	61	59	65	59	67	71
	<i>Less frequently</i>	19	9	20	20	27	22	17
Walk or bike instead of drive	<i>More frequently</i>	28	40	32	32	19	19	17
	<i>About the same</i>	53	49	50	49	56	61	64
	<i>Less frequently</i>	19	11	18	19	25	20	19
Over the next 12 months, how likely are you to change most of the light bulbs in your house to energy-efficiency compact fluorescent lights (CFLs)?*	<i>Yes, I'd like to and probably will</i>	34	33	53	30	40	27	14
	<i>Yes, I'd like to but probably won't</i>	30	40	28	42	25	27	10
	<i>No, I don't want to</i>	23	9	8	20	15	32	63
	<i>I don't know</i>	13	19	11	8	19	15	12

TABLE 23 | Consumer Activism

Over the past 12 months, how many times have you done these things?		<i>National Average</i>	<i>Alarmed (12%)</i>	<i>Concerned (27%)</i>	<i>Cautious (25%)</i>	<i>Disengaged (10%)</i>	<i>Doubtful (15%)</i>	<i>Dismissive (10%)</i>
Rewarded companies that are taking steps to reduce global warming by buying their products.	<i>Many times (6+)</i>	6	32	6	2	0	2	0
	<i>Several times(4-5)</i>	7	21	9	6	2	0	0
	<i>A few times(2-3)</i>	17	21	28	21	7	6	4
	<i>Once</i>	5	3	5	6	5	5	0
	<i>Never</i>	44	10	29	43	53	68	82
	<i>Don't Know</i>	21	13	23	23	33	20	14
Punished companies that are opposing steps to reduce global warming by NOT buying their products.	<i>Many times (6+)</i>	8	39	8	2	0	1	0
	<i>Several times(4-5)</i>	5	13	8	2	1	1	0
	<i>A few times(2-3)</i>	11	13	16	15	5	4	0
	<i>Once</i>	3	5	3	5	2	2	0
	<i>Never</i>	53	18	38	56	58	76	86
	<i>Don't Know</i>	21	11	26	20	34	16	14
Over the next 12 months, would you like to punish companies that are opposing steps to reduce global warming by NOT buying their products...	<i>More frequently</i>	35	78	57	28	15	10	1
	<i>About the same</i>	55	14	39	59	77	81	75
	<i>Less frequently</i>	10	8	5	13	8	9	24
Over the next 12 months do you intend to buy the products of companies that are taking steps to reduce global warming...	<i>More frequently</i>	39	89	58	35	26	4	2
	<i>About the same</i>	54	11	38	55	69	86	79
	<i>Less frequently</i>	8	0	4	10	5	10	19

TABLE 24 | Political Activism

Over the past 12 months, how many times have you done these things?		National Average	Alarmed (12%)	Concerned (27%)	Cautious (25%)	Disengaged (10%)	Doubtful (15%)	Dismissive (10%)
Volunteered with or donated money to an organization working to reduce global warming	<i>Many times (6+)</i>	1	4	1	0	0	0	0
	<i>Several times(4-5)</i>	2	4	3	2	1	1	0
	<i>A few times(2-3)</i>	7	19	10	4	5	2	0
	<i>Once</i>	7	27	8	6	1	2	0
	<i>Never</i>	77	42	73	84	70	93	98
	<i>Don't Know</i>	6	3	7	3	23	3	2
Posted a comment online in response to a news stories or blog about global warming	<i>Many times (6+)</i>	1	3	1	0	0	2	2
	<i>Several times(4-5)</i>	2	4	2	1	0	1	3
	<i>A few times(2-3)</i>	5	10	4	5	2	5	5
	<i>Once</i>	4	6	2	6	1	3	1
	<i>Never</i>	85	75	87	86	80	88	87
	<i>Don't Know</i>	4	2	5	2	17	1	2
Written letters, emailed, or phoned government officials about global warming	<i>Many times (6+)</i>	1	3	1	0	0	1	0
	<i>Several times(4-5)</i>	1	4	0	2	0	1	1
	<i>A few times(2-3)</i>	4	8	5	2	3	2	4
	<i>Once</i>	4	13	4	4	0	1	2
	<i>Never</i>	86	71	86	89	80	93	91
	<i>Don't Know</i>	4	1	3	2	17	1	2
When you contacted a government official, did you...*								
Urge them to take action to reduce global warming		76	97	93	70	100	0	0
Urge them to not take action to reduce global warming?		21	3	0	25	0	100	100
Other		3	0	7	5	0	0	0
	<i>n**</i>	96	32	27	20	3	8	6

*Asked if respondent had contacted a government official one or more times.

**N is for this item only; all other items on the page were asked of the full sample. Please note small cell sizes.

TABLE 25 | Political Activism Intentions

Over the next 12 months, would you like to do the following...		National Average	Alarmed (12%)	Concerned (27%)	Cautious (25%)	Disengaged (10%)	Doubtful (15%)	Dismissive (10%)
Volunteer with or donate money to an organization working to reduce global warming	<i>More often</i>	17	43	22	15	12	3	0
	<i>About the same</i>	64	52	64	69	73	66	53
	<i>Less often</i>	20	6	14	16	15	30	47
Post a comment online in response to a news stories or blog about global warming	<i>More often</i>	10	27	13	5	9	2	1
	<i>About the same</i>	68	64	65	75	74	68	63
	<i>Less often</i>	22	9	22	20	17	30	36
Write letters, email, or phone government officials about global warming	<i>More often</i>	12	38	16	3	9	2	4
	<i>About the same</i>	66	53	63	75	74	67	57
	<i>Less often</i>	23	8	21	21	17	31	39

If you were to contact government officials about global warming, would you....*

Urge them to take action to reduce global warming?	72	98	97	80	73	17	0	
Urge them to not take action to reduce global	15	1	1	7	4	49	71	
Other	13	1	2	13	23	34	29	
	<i>n**</i>	725	110	201	182	74	100	58

*Asked if respondent intends to contact officials more frequently or about the same.

**N if for contact intentions question only; all other questions on this page were asked of all respondents.

TABLE 26 | Household Income and Perceived Impact of the Economic Downturn

How much has the economic downturn in this country since 2008 personally hurt you and your family?		<i>National Average</i>	<i>Alarmed (12%)</i>	<i>Concerned (27%)</i>	<i>Cautious (25%)</i>	<i>Disengaged (10%)</i>	<i>Doubtful (15%)</i>	<i>Dismissive (10%)</i>
<i>A lot</i>	30	51	33	22	31	22	26	
<i>Some</i>	33	26	32	37	29	36	35	
<i>A little</i>	27	18	28	29	28	27	25	
<i>Not at all</i>	10	4	6	12	12	15	14	
Household income								
<i>\$100K+</i>	23	22	24	26	7	25	27	
<i>\$60K-\$99.9K</i>	23	12	24	28	24	25	22	
<i>\$30K-\$59.9K</i>	29	33	26	27	38	27	34	
<i>less than \$30K</i>	24	34	26	20	31	23	17	
"With the economy in such bad shape, the US can't afford to reduce global warming."								
<i>Strongly Agree</i>	15	7	6	8	2	31	51	
<i>Somewhat Agree</i>	37	14	32	45	57	44	27	
<i>Somewhat Disagree</i>	33	22	48	42	29	19	9	
<i>Strongly Disagree</i>	16	58	15	5	12	5	14	

TABLE 27 | Social Networking

How often do you use each of the following?		<i>National Average</i>	<i>Alarmed (12%)</i>	<i>Concerned (27%)</i>	<i>Cautious (25%)</i>	<i>Disengaged (10%)</i>	<i>Doubtful (15%)</i>	<i>Dismissive (10%)</i>
Email	<i>Very Often</i>	43	58	47	43	28	32	42
	<i>Often</i>	24	19	29	26	17	23	26
	<i>Sometimes</i>	17	13	10	21	24	25	9
	<i>Hardly ever</i>	6	3	6	6	3	4	12
	<i>Never</i>	11	8	8	4	27	17	10
Text messaging	<i>Very Often</i>	25	27	28	28	25	21	13
	<i>Often</i>	15	20	17	21	8	10	8
	<i>Sometimes</i>	15	15	12	14	16	17	18
	<i>Hardly ever</i>	10	5	12	13	5	9	12
	<i>Never</i>	35	33	31	24	45	44	49
Social networking sites (Facebook, MySpace, Tumblr, etc.)	<i>Very Often</i>	23	30	27	23	31	17	11
	<i>Often</i>	15	12	17	17	10	12	13
	<i>Sometimes</i>	15	15	11	17	15	21	11
	<i>Hardly ever</i>	10	7	13	11	2	12	13
	<i>Never</i>	37	36	32	33	42	39	52
Blogs	<i>Very Often</i>	3	6	3	3	0	3	2
	<i>Often</i>	3	5	3	3	0	3	5
	<i>Sometimes</i>	9	8	11	8	11	8	6
	<i>Hardly ever</i>	13	9	14	21	3	10	9
	<i>Never</i>	72	72	69	65	86	75	78
Twitter	<i>Very Often</i>	3	4	2	3	0	5	1
	<i>Often</i>	2	1	2	3	2	0	0
	<i>Sometimes</i>	5	3	2	8	7	5	5
	<i>Hardly ever</i>	6	8	8	7	3	5	3
	<i>Never</i>	84	83	87	79	88	85	91

TABLE 28 | Organizational Memberships

Are you a member of any of the following types of groups?	<i>National Average</i>	<i>Alarmed (12%)</i>	<i>Concerned (27%)</i>	<i>Cautious (25%)</i>	<i>Disengaged (10%)</i>	<i>Doubtful (15%)</i>	<i>Dismissive (10%)</i>
AARP	23	28	23	22	22	27	11
Labor union	13	16	13	15	8	9	10
Parent-Teacher association (PTA)	9	13	10	13	3	5	5
Veteran's association	9	3	10	7	12	12	0
Religious study group/Church group/Church board	8	9	3	10	7	12	12
Service club or fraternal organization, such as Rotary, Optimists, Elks, etc.	7	8	6	6	4	11	7
Animal rights organization	6	14	6	5	2	4	6
YMCA	6	7	6	8	4	5	4
Environmental organization	5	14	7	4	2	1	1
Chamber of Commerce	3	4	1	3	4	3	6

TABLE 29 | Military Service

	<i>National Average</i>	<i>Alarmed (12%)</i>	<i>Concerned (27%)</i>	<i>Cautious (25%)</i>	<i>Disengaged (10%)</i>	<i>Doubtful (15%)</i>	<i>Dismissive (10%)</i>
Are you a current or former member of the U.S. Armed Forces?							
Army	5	6	2	6	4	5	8
Navy	2	3	1	2	3	5	2
Air Force	3	0	2	2	5	7	4
Marines	1	2	1	2	0	3	0
Coast Guard	0	0	0	0	0	0	1
No military service	88	90	94	87	88	81	85
Are you...							
Discharged	76	69	87	67	75	85	71
Retired from U.S. Armed Forces	19	31	7	30	8	7	29
Reserves	3	0	7	0	0	7	0
Active duty	2	0	0	0	17	0	0
Currently serving	1	0	0	3	0	0	0
Is any member of your immediate family (parents, siblings or children) an active serving member of the U.S. Armed Forces?							
Yes	14	14	15	9	14	17	12

TABLE 30 | Party Identification, Political Ideology, and Voter Registration

		<i>National Average</i>	<i>Alarmed (12%)</i>	<i>Concerned (27%)</i>	<i>Cautious (25%)</i>	<i>Disengaged (10%)</i>	<i>Doubtful (15%)</i>	<i>Dismissive (10%)</i>
Generally speaking, do you think of yourself as a...	<i>Republican</i>	25	12	14	27	15	36	61
	<i>Democrat</i>	32	54	39	33	31	19	2
	<i>Independent</i>	23	23	28	22	11	26	22
	<i>Other</i>	3	3	1	3	3	3	9
	<i>No party/not interested in politics</i>	17	8	17	17	40	16	6
In general, do you think of yourself as...	<i>Very conservative</i>	11	8	5	5	4	16	46
	<i>Somewhat conservative</i>	23	8	16	27	18	33	38
	<i>Moderate, middle of the road</i>	44	38	48	50	63	42	12
	<i>Somewhat liberal</i>	15	24	24	14	11	7	1
	<i>Very liberal</i>	7	24	7	4	3	2	2
Do you consider yourself part of the Tea Party movement or not?	<i>Yes</i>	10	6	2	7	1	17	42
	<i>No</i>	68	79	73	76	64	60	42
	<i>Don't know</i>	22	15	25	17	35	23	16
Are you registered to vote?	<i>Yes</i>	81	88	77	84	61	80	95
	<i>No</i>	17	11	21	14	34	18	5
	<i>Not sure</i>	2	1	3	2	5	1	0

Methodology

These results come from nationally representative surveys of American adults, aged 18 and older. The samples were weighted to correspond with US Census Bureau parameters for the United States.

The surveys were designed by Anthony Leiserowitz and Nicholas Smith of Yale University and Edward Maibach and Connie Roser-Renouf of George Mason University, and were conducted by Knowledge Networks, using an online research panel of American adults.

- May 2011: Fielded April 23rd through May 12th with 981 American adults. The margin of sampling error is plus or minus 3 percent, with 95 percent confidence.
- June 2010: Fielded May 14 through June 1 with 1,024 American adults. The margin of sampling error is plus or minus 3 percent, with 95 percent confidence.
- January 2010: Fielded December 24, 2009 through January 3, 2010 with 1,001 American adults. The margin of sampling error is plus or minus 3 percent, with 95 percent confidence.
- November 2008: Fielded October 7 through November 12 with 2,164 American adults. Data were collected in two waves: wave 1 from October 7 through October 20, and wave 2 from October 24 through November 12. The margin of sampling error is plus or minus 2 percent, with 95 percent confidence.

The six audience segments were first identified in analyses of the 2008 data set. Latent Class Analysis was used to segment respondents, based on 36 variables representing four distinct constructs: global warming beliefs, issue involvement, policy preferences and behaviors. Discriminant functions derived from the latent class analysis were used with the 2011 and 2010 data sets to replicate the earlier analysis and identify changes in the groups.

The prior reports on Global Warming's Six Americas are available at our websites:
<http://climatechange.gmu.edu> and <http://environment.yale.edu/climate>